

Model EPC

Electronic Proportional Control Valve

The Porter Instrument Model EPC Electronic Proportional Control Valve is an electromagnetically-actuated, proportional control valve designed for use in closed loopflow or pressure control systems. When coupled with a flow sensor or pressure transducer and a proportional electronic controller, Model EPC is capable of providing steady and precise control of gas flow rates or pressures. The Model EPC is a DC-driven, normally-closed valve which includes an elastomeric valve seat to provide bubble-tight shut-off. A broad range of flow coefficients (Cv's) is available for either flow or pressure control. The Model EPC is offered with either integral compression fittings for in-line mounting or as a manifold mount version. To allow design and user flexibility, custom configurations in OEM-scale quantities are also available.



CONTACT INFORMATION:

Parker Hannifin Corporation
Porter Instrument Division
245 Township Line Road
Hatfield, PA 19440

Phone 215 723 4000
Fax 215 723 2199
industrial@parker.com

www.porterinstrument.com

PRODUCT FEATURES:

- Greater Than 50:1 Dynamic Range
- Many Electrical and Mechanical Configurations Available
- Low Cost
- Easily Customized
- Low Power Consumption
- Bubble-Tight Shut-Off
- Cleaned for Use in Analytical Instrumentation



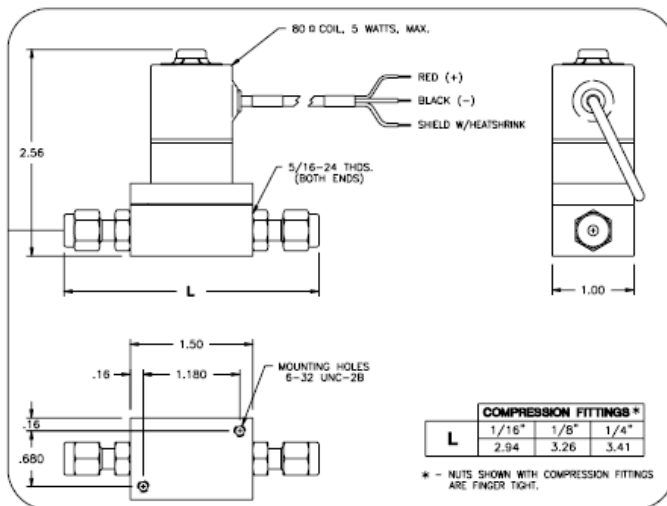
ENGINEERING YOUR SUCCESS.

Specifications

Mechanical Specifications	
Maximum Operating Pressure	200 PSIG
Maximum Operating Temperature	85° C (185°F)
Available C _v 's	1.6 x 10 ⁻⁴ to 4.0 x 10 ⁻²
Flow Capacity	40 SCCM up to 10,000 SCCM Full Scale (nitrogen at 70°F & 5 PSID)
Rangeability	50:1 minimum
Fitting Sizes and Type	1/16", 1/8" or 1/4" compression
Electrical Specifications	
Coil and Connection Resistance	75-85 ohms
Coil Inductance	25 mH
Opening Voltage	2.5-7 Vdc
Control Range Span	1-2 Vdc
Power Dissipation	0.8 watts typical
Materials of Construction	
Valve Base (Body)	Aluminum (black-anodized) or Stainless Steel
Orifice	Brass or Stainless Steel
Valve Trim	Stainless Steel
O-Rings and Valve Seat	Buna N, EPDM, Kalrez®, Neoprene or Viton®
Fittings	Brass or Stainless Steel

DIMENSIONAL DATA

Model EPC with Valve Base



Manifold-Mount Model EPC

